

**INCLUDED IN THIS KIT:**

- 319124 Replacement Venturi



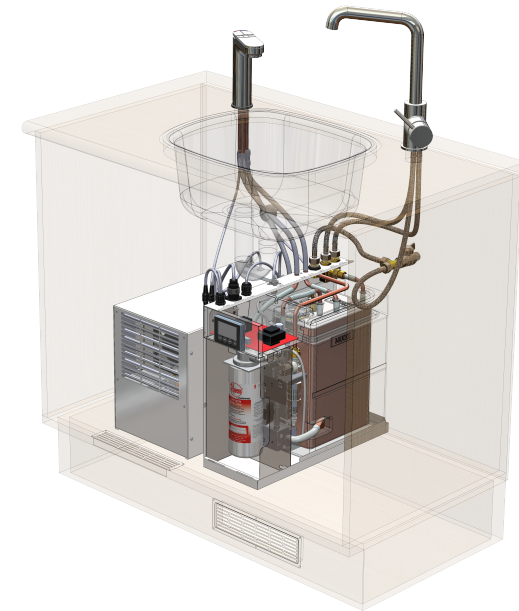
*FOR RHEEM SERVICE  
TELEPHONE  
131 031 AUSTRALIA  
0800 657 335 NEW ZEALAND*

[www.rheem.com.au](http://www.rheem.com.au)  
[www.rheem.co.nz](http://www.rheem.co.nz)

For warranty details please refer to product owners guide.

Note: Every care has been taken to ensure accuracy in preparation of this publication. No liability can be accepted for any consequences, which may arise as a result of its application.

## ***319124 Replacement Venturi Instructions***



## ***UNDERBENCH BOILING WATER APPLIANCE***



# Servicing the Venturi

**WARNING** Removing the appliance jacket will expose 240V wiring and must only be undertaken by a suitably qualified person.

Before removing jacket;

- Turn off power to the appliance and remove plug from wall socket.
- Turn off the water supply at isolation valve.

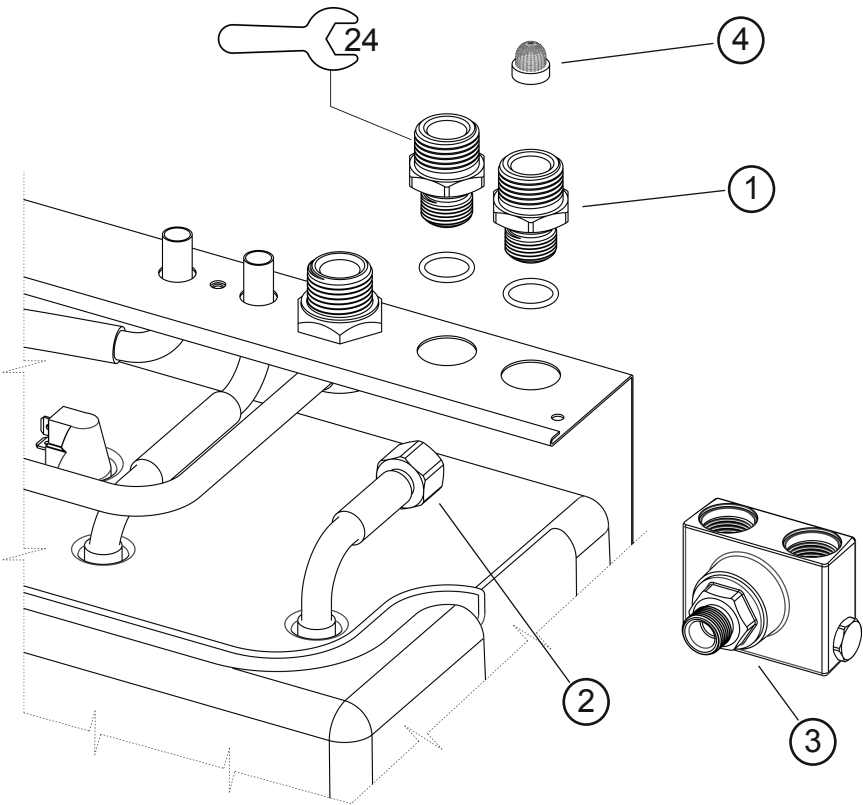
## Venturi replacement

### To remove venturi

1. Disconnect suction line from tank at compression fitting (2).
2. Disconnect flexible hoses at venturi nipples (1). Note: A small amount of water will drain from hoses so a container or rag to mop up the water is required.
3. Remove the nipples from the appliance using spanner.
4. Venturi can now be removed from appliance.

### To install venturi

1. The inlet fittings are sealed with o-rings, before fitting ensure the o-rings are correctly fitted not twisted or cut.
2. Position the venturi in the appliance case and fit the inlet nipples to the venturi to secure it in place. Tighten the inlet nipples firmly ensuring the o-ring seals sit into the mating gland.
3. Connect compression fitting on the suction tube to the venturi.
4. Ensure filter is installed in inlet from mixer (nipple black hose is connected to).
5. Screw the mixer's flexible hoses to the nipples ensuring the colour coded hose match the correctly labelled nipple.



ITEM	DESCRIPTION
1	NIPPLE VENTURI
2	SUCTION FITTING
3	VENTRUI
4	FILTER BASKET
5	NON-RETURN
6	O-RING 018 EPDM
7	FILTER BASKET