

# Boiling, Filtered and Chilled Water by Rheem



# Rheem. Ready when you are.

Rheem New Zealand's range of boiling, chilled and filtered water systems are designed to provide the best solution to our customer's needs, whether it's in the home, small office or a large factory.

We manufacture reliable and sophisticated boiling water solutions backed by over 40 years of market-leading expertise, a reputation for excellence and good old fashioned customer service.

Our commitment to innovative design and function is supported by our own research and development teams working in New Zealand, Australia and around the Globe.

We have developed the most innovative, functional, cost-effective products that also demonstrate our commitment to economic and environmental responsibility.

## Design, Form and Function by Rheem

Rheem On-Tap instant boiling and chilled filtered water systems are engineered to fit in the tight spaces commonly found in the kitchen, boardroom or living area.

The Lazer range of overbench instant boiling water units are perfect for small businesses through to large commercial operations — with capacities ranging from 3–40 litres in three distinct styles and white or stainless steel finish options.

Our passion is to provide solutions designed to meet customer needs and reduce our impact on the environment.

## Energy Saving by Rheem

Rheem instant boiling, filtered and chilled water systems can reduce energy use by up to 40 per cent. The programmable sleep mode and timer systems will turn off heating energy when you don't need it, which adds up to a significant saving over a normal working week.

## Nationwide Service by Rheem

All Rheem products are backed by an unequalled nationwide network of experienced sales and service centres, giving you the support you need, when you need it.





A flexible solution for every application, counter or wall, large volume or small.





# Rheem On-Tap. Stylish design, space-saving, safe and energy-efficient.

## Performance that's Out of Sight

Many people spend half of their lives in the office. Modern offices are designed to make the working experience as efficient and pleasant as possible. The office kitchen is no different. A Rheem On-Tap system is stylish and locates all the 'plumbing' out of sight under the sink. The Rheem modular system gives high flexibility of installation on a sink or a bench top accessing under bench spaces that would not be possible with some other systems. With a Rheem On-Tap system there's no compromise on performance – instant boiling, chilled or filtered water from a great looking tap in a clean and uncluttered kitchen environment.

## Instant Boiling Water with Rheem Reliability

No waiting for tea or coffee. Rheem boiling water systems can be always ready for action up to 170 cups per hour<sup>1</sup>... and you know you can count on Rheem reliability as New Zealand's trusted market leader for over 40 years.

## Chilled to Perfection

Chilled water is a delicious, refreshing option. Rheem On-Tap offer systems that provide both filtered boiling, filtered ambient or filtered chilled water.

## Filtered Purity and Clean Taste

Many water impurities are filtered out reducing such things as lime-scale build-up. The On-Tap filter also removes non-water tastes such as chlorine. A filter light tells you when the filter needs to be replaced which can be easily done by the users. Clear, clean, pure water every time.

## Child Safe

The Rheem On-Tap system has an optional setting for two fingered use so that boiling water cannot be inadvertently dispensed providing extra safety for young children and others at risk.

## Energy Efficient

The 7 day timer means that you can have filtered boiling and/or chilled water when you want it and save energy when you don't. You can also set the hot water temperature to anywhere between 70 and 99 degrees... or let the system set itself which means you will always get boiling water.

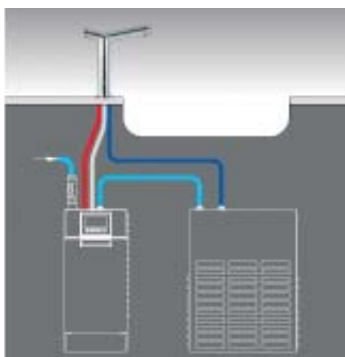
Sleep mode turns the On-Tap system off when it hasn't been used for a specified time (usually 2 hours). With the combined use of the timer and sleep mode over a normal working week, a Rheem On-Tap system can reduce energy use by up to 40%.<sup>2</sup>

## Stylish and Flexible Accessories

The Rheem On-Tap system operates on the bench over a sink or with a space-saving and sleek sink-free kit which includes a drainage gate and tap extension to deal with tall jugs, bottles, pots etc. Chillers require ventilation and Rheem offer a grill, exhaust, intake and fan system which can be located very discreetly at kick board level.

## Warranty

Rheem On-Tap systems carry a 5 year warranty for tanks plus 1 year for parts and labour.<sup>3</sup>



The Rheem on-tap modular system gives high flexibility of installation that would not be possible with some other systems.



## Rheem On-Tap

INSTANT BOILING 

INSTANT CHILLED 

BOTH FILTERED 



# LAZER® OFFICE

The Rheem Lazer Office offers simplicity with efficiency.

An attractive asset to any workplace kitchen or boardroom, Rheem Lazer Office is packed with performance features with a clean, sophisticated look. It is available in two stylish finishes — powder coat white and brushed stainless steel.

Easy to operate and keep clean, Rheem Lazer Office is available in three and five litre capacities — equating to 20 to 35 cups of ready to use boiling water and 103 cups recovery per hour. The temperature can be set from anywhere between 70 to 99 degrees.

## Perfect Fit

Among the features that ensure the Rheem Lazer Office is a perfect fit for the workplace are the stylish look and feel, an internal tap and protection against running dry.



## Seven Day Timer

The built-in, seven day timer ensures there is boiling water at the ready when you need it, but saves energy when no one is around. The sleep mode automatically shuts down the Lazer Office if it hasn't been used for two hours. Combining these features can reduce energy use by up to 40%<sup>2</sup> over a normal working week.

## Extended Warranty

Rheem Lazer Office carries a seven year warranty for tanks plus a one year warranty for parts and labour.<sup>3</sup>



Rheem Lazer® Office has a flush mount tap, built-in timer and display with an electronic controller that makes operation simple.





# LAZER® ECO

## Boiling Water Powerhouse

Rheem Lazer Eco is a cost-effective boiling water powerhouse designed for a wide range of installations such as the workplace or sports club.

## Economic At Its Core

It's easy to use with a one-touch button to switch on "Eco Mode" which automatically turns the Lazer Eco off after two hours, reducing power consumption.

The indicator light shows red when heating and green when in energy conservation "Eco Mode", so you can see what it's doing at a glance.

"Eco Mode" can reduce energy use by over 40%.<sup>2</sup>

## Easy to Clean

The good looking white powder coat finish is easy to clean and the Lazer Eco comes in 3, 5 and 7.5 litre models delivering up to 50 cups immediately and 103–123 cups of boiling water an hour.<sup>1</sup>

Automatic safety devices ensure the unit never boils dry and it also features automatic calibration of the boiling point for whatever altitude the unit is installed at.

The Lazer Eco comes with the reliability and back-up service you expect from Rheem, New Zealand's market leader and most trusted name in water heating and boiling water for over 40 years.



Eco-mode is a unique one button control that gives you boiling water with reduced energy consumption.





# LAZER<sup>®</sup> COMMERCIAL

## For the Busy Workplace

The Rheem Lazer Commercial is a high capacity boiling water system designed for the demands of a busy workplace, sports club, conference centre and more. The Lazer Commercial range has capacities of 7.5, 10, 15, 25 and 40 litres that can deliver from 50–247 cups of boiling water an hour and 103–241 cups per hour recovery.<sup>1</sup>

## Easy Operation

The features offered by the Commercial range of boiling water units include easy care and operation. The user friendly timer and controls are integrated into the fascia (Stainless Steel or Powder Coat White), leaving the surfaces smooth for cleaning. The control functions automatically return to your settings in the event of a power cut.

## Energy Efficient, Smart Technology

The seven day timer ensures you have boiling water at the ready and turns the energy off when boiling water is not required. Sleep mode will turn off the system automatically when it has not been used for a set period of time. Combining the timer and sleep mode can reduce energy use by up to 40% over a normal working week.<sup>2</sup>

## Extra Features

Automatic safety devices ensure the unit never boils dry and it also features automatic calibration of the boiling point for whatever altitude the unit is installed at. The high flow tap offers up to 35% faster filling.<sup>4</sup>

The Lazer Commercial is compact with a smaller footprint to make best use of the available space in your kitchen.

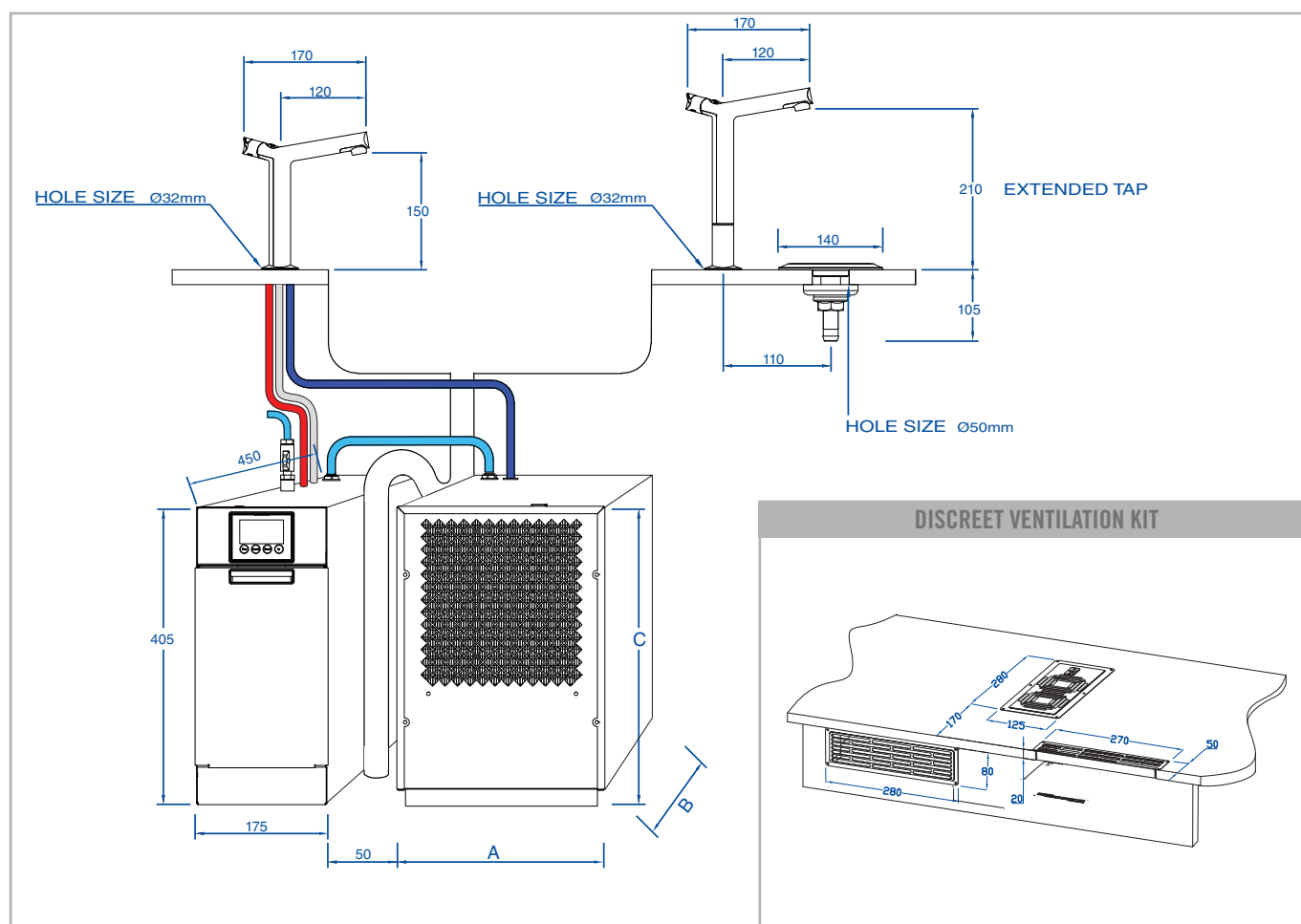


The Rheem Lazer Commercial range can deliver from around 50 to 247 cups of boiling water per hour.<sup>1</sup>



# Rheem® On-Tap Product Data

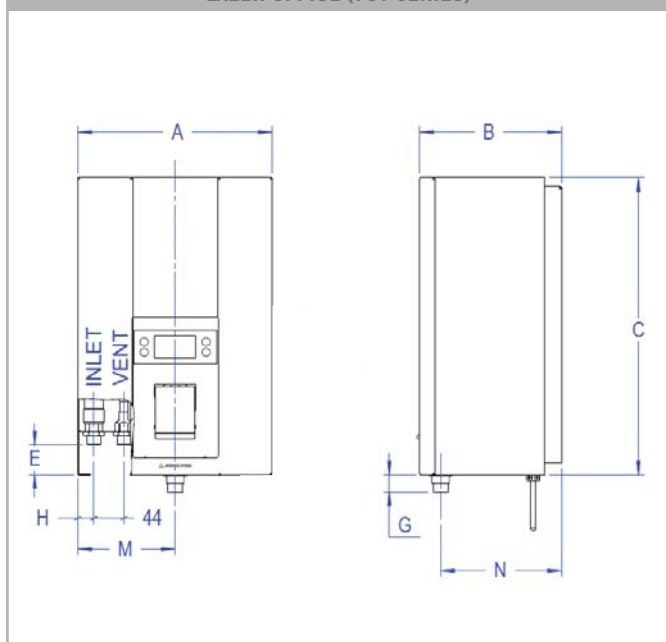
Rheem on-tap Series		Filtered Boiling & Drinking Water				Filtered Chilled Water			
		Boiling 3L	Chiller 3L	Boiling 3L	Chiller 6L	Boiling 5L	Chiller 3L	Boiling 5L	Chiller 6L
White Powdercoat		740003PC	290250-3	740003PC	290251-5	740005PC	290250-3	740005PC	290251-5
Capacity	Litres	3	3	3	6	5	3	5	6
Delivery – Initial	Litres	4	3	4	6	5	3	5	6
	Cups	24	15	24	30	31	15	31	30
Recovery	L/hr	24	25	24	34	28	25	28	34
	- Cups per hour	145	125	145	175	170	125	170	175
Weight empty	kg	12	22	12	31	12	22	12	31
Weight full	kg	18	25	18	37	18	25	18	37
Min water pressure	kPa	100		100		100		100	
Max water pressure	kPa	1000		1000		1000		1000	
Input	kW	1.8		1.9		2.1		2.2	
Electrical connections		10amp 3pins plug & Flex		10amp 3pins plug & Flex		10amp 3pins plug & Flex		10amp 3pins plug & Flex	
Plumbing connections		½" BSPM		½" BSPM		½" BSPM		½" BSPM	
Dimensions	mm								
A - Width		175	282	175	282	175	282	175	282
B - Depth		450	430	450	450	450	430	450	450
C - Height		405	360	405	405	405	360	405	405
Accessories	Part No								
Sink-free kit	317453	Optional	-	Optional	-	Optional	-	Optional	-
Discreet ventilation kit	317255	-	Supplied	-	Supplied	-	Supplied	-	Supplied



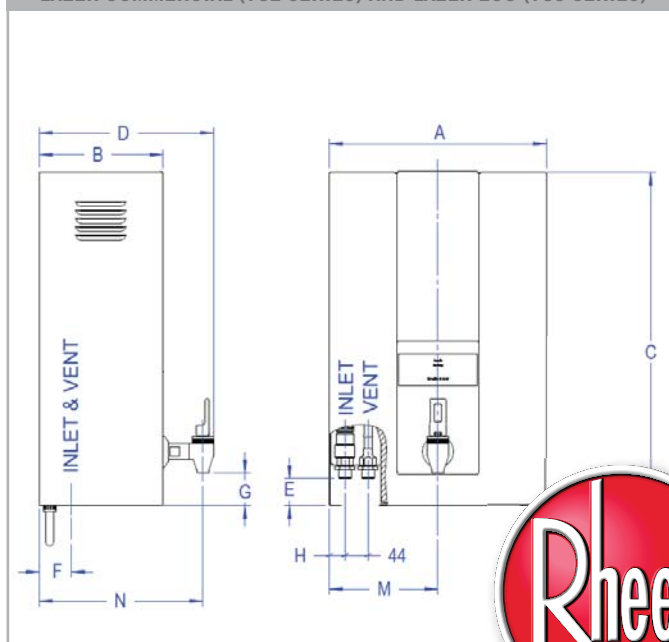
## Rheem Lazer® Product Data

Lazer Boiling Water Unit		Lazer Office		Lazer Eco			Lazer Commercial				
White		70103W-NZ	70105W-NZ	70303W-NZ	70305W-NZ	70307W-NZ	70207W-NZ	70210W-NZ	70215W-NZ	70225W-NZ	70240W-NZ
Stainless Steel		70103S-NZ	70105S-NZ				70207S-NZ	70210S-NZ	70215S-NZ	70225S-NZ	70240S-NZ
Capacity	Litres	3	5	3	5	7.5	7.5	10	15	25	40
Delivery – Initial	Litres	3.5	6	3.5	6	8.5	8.5	11	17	27	42
	Cups	20	35	20	35	50	50	65	100	159	247
Recovery – Mins to full heat	L/hr	17.5	21	17.5	21	21	21	21	21	33	41
	Mins	12	15	12	15	22	22	29	40	40	50
Weight empty	kg	6	8	6	8	9	9	10	15	17	19
Weight full	kg	10	15	10	15	19	19	22	34	47	67
Min water pressure	kPa	50	50	50	50	50	50	50	75	75	100
Max water pressure	kPa	1000	1000	1000	1000	1000	1000	1000	1000	1000	1000
Input	kW	1.8	2.4	1.8	2.4	2.4	2.4	2.4	2.4	3.6	4.6
Electrical connections		Supplied with 10amp 3 pin plug and flex									Hard wired
Plumbing connections		1/2" BSPM									
Dimensions	mm										
A		283	334	283	334	334	334	334	334	334	490
B		206	239	158	191	191	191	191	299	299	340
C		435	465	435	465	515	515	615	515	720	615
D		–	–	231	264	264	311	311	419	419	460
E		60	60	60	60	60	60	60	60	60	60
F		45	45	45	45	45	45	45	45	45	45
G		25	25	44	44	44	58	58	58	58	85
H		17	17	17	17	17	17	17	17	17	17
M		141.5	167	141.5	167	167	167	167	167	167	245
N		174	207	236	269	269	269	269	377	377	418

LAZER OFFICE (701 SERIES)



LAZER COMMERCIAL (702 SERIES) AND LAZER ECO (703 SERIES)







Innovative design



Sophisticated energy efficiency



Modular solutions for any environment

## Rheem Choice

Providing the best solutions for chilled, filtered and boiling water is Rheem's purpose and passion.

Our reputation has been built on consistently providing customers with the very best products – reliable, sophisticated and functional chilled, filtered and boiling water systems.

Our commitment to well designed and functional products starts with research and development facilities located in New Zealand, Australia and around the globe. These facilities have developed revolutionary systems that combine customer requirements for smart and functional systems with economic and environmental concerns.

For you it means ready access to the best designs, manufacturing and back up available.

## Rheem Service

Rheem products are supported by an unequalled network of experienced technical advisors and professional after sales service technicians across New Zealand. No matter where you are within New Zealand there is expert advice available, ensuring you get the support you need.

## Rheem Guarantee

When the time comes to install your chilled, filtered and boiling water system, Rheem provides convenience and top quality performance. This is guaranteed by our ongoing support and Individual Product warranty.<sup>3</sup>

### WARRANTY:<sup>3</sup>

#### Rheem® On-Tap

1 year warranty on parts and labour plus 5 years for tank.

#### Rheem Lazer® Commercial

1 year warranty on parts and labour plus 5 years for tank.

#### Rheem Lazer® Eco

1 year warranty on parts and labour plus 5 years for tank.

#### Rheem Lazer® Office

1 year warranty on parts and labour plus 7 years for tank.

### Rheem New Zealand Limited

Customer Service Freephone 0800 657 336 • Freefax 0800 657 337  
After Sales Service Freephone 0800 657 335 • Telephone 09 829 0200

Rheem Head Office, 475 Rosebank Road, Avondale 1026  
PO Box 19011, Avondale, Auckland 1746, New Zealand

For further information visit us at [www.rheem.co.nz](http://www.rheem.co.nz)

® Registered Trademark of Rheem New Zealand Ltd.

1. Cup size is 170mL and glass size for chilled water is 200mL.
  2. Potential energy consumption savings values are approximate and provided for general reference purposes only. Actual heat loss reductions will vary depending on the system installed, regional temperatures, geographical location and other factors.
  3. Conditions apply. For full warranty and details please contact Rheem or see Installation manual.
  4. Based on Rheem flow rate of up to 11 Litres/min versus a competitors flow rate of up to 8 Litres/min.
- All specifications contained in this brochure are subject to change without notice. Please check the specifications are current at the time of ordering the appliance.



Quality  
Endorsed  
Company

ISO 9001  
Lic. QEC 14766  
SAI Global



WaterMark

AS 3498  
Lic. WMKA0177  
SAI Global

